



# Complete Treatment Response of Isolated Lacrimal IgG4-Related Disease on <sup>18</sup>F-FDG PET/CT Imaging

## İzole Lakrimal IgG4 İlişkili Hastalıkta <sup>18</sup>F-FDG PET/BT'de Tam Tedavi Yanıtı

Ali Kibar, Sertaç Asa, Onur Erdem Şahin, Lebriz Uslu-Beşli, Sait Sağer, Kerim Sönmezoğlu, Haluk Burçak Sayman

Istanbul University-Cerrahpaşa, Cerrahpaşa Faculty of Medicine, Department of Nuclear Medicine, İstanbul, Türkiye

### Abstract

We describe a case of a 57-year-old woman with isolated immunoglobulin G4-related disorder affecting her lacrimal glands. Pre-treatment <sup>18</sup>F-fluorodeoxyglucose-positron emission tomography/computed tomography (<sup>18</sup>F-FDG PET/CT) showed diffuse enlargement and increased FDG uptake in both lacrimal glands. After immunosuppressive treatment, <sup>18</sup>F-FDG PET/CT showed no significant FDG uptake, and the sizes of both glands returned to normal.

**Keywords:** Lacrimal, IgG4, FDG, PET, treatment

### Öz

Elli yedi yaşında, izole lakrimal immünoglobulin G4 ilişkili hastalık tanısı almış bir kadın olgusu sunuyoruz. Tedavi öncesi yapılan, <sup>18</sup>F-florodeoksiglukoz pozitron emisyon tomografisi/bilgisayarlı tomografi (<sup>18</sup>F-FDG PET/BT), her iki lakrimal bezde de yaygın boyut artışı ve FDG tutulumu göstermiştir. İmmünoşüpresif tedavi sonrası yapılan <sup>18</sup>F-FDG PET/BT'de anlamlı bir FDG tutulumu izlenmemiş olup her iki bezin boyutları normale dönmüştür.

**Anahtar Kelimeler:** Lakrimal, IgG4, FDG, PET, tedavi

**Address for Correspondence:** Ali Kibar, İstanbul University-Cerrahpaşa, Cerrahpaşa Faculty of Medicine, Department of Nuclear Medicine, İstanbul, Türkiye

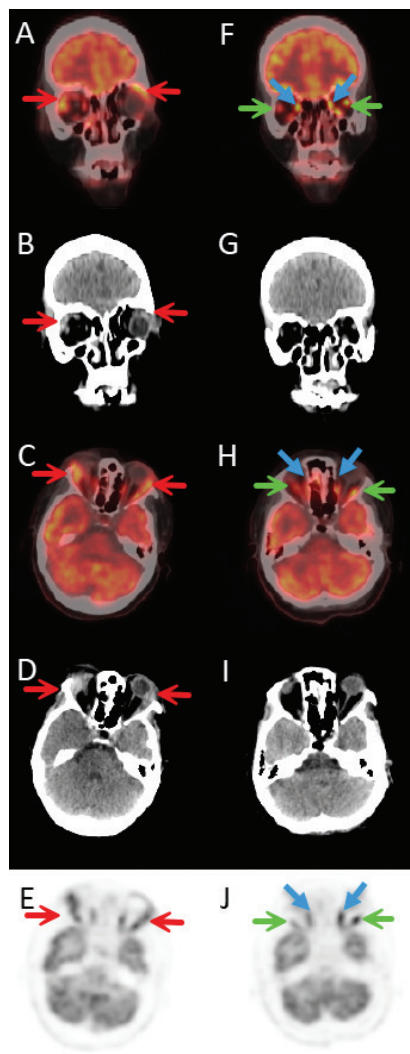
**E-mail:** alikibar01@gmail.com **ORCID ID:** orcid.org/0000-0003-0073-2343

**Received:** 18.02.2025 **Accepted:** 26.10.2025 **Epub:** 26.11.2025 **Publication Date:** 04.06.2026

**Cite this article as:** Kibar A, Asa S, Şahin OE, Uslu-Beşli L, Sağer S, Sönmezoğlu K, Sayman HB. Complete treatment response of isolated lacrimal IgG4-related disease on <sup>18</sup>F-FDG PET/CT imaging. Mol Imaging Radionucl Ther. 2026;35(2):117-119.



Copyright© 2026 The Author(s). Published by Galenos Publishing House on behalf of the Turkish Society of Nuclear Medicine. This is an open access article under the Creative Commons Attribution-NonCommercial-NoDerivatives 4.0 (CC BY-NC-ND) International License.



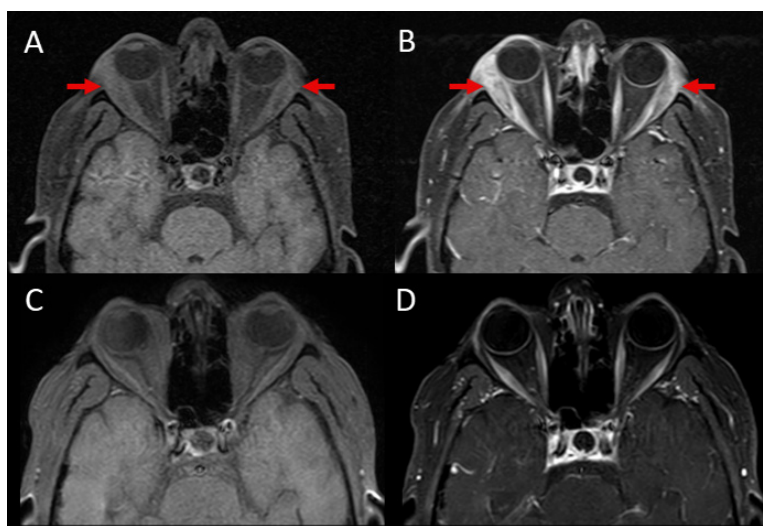
**Figure 1.** Immunoglobulin G4-related disease (IgG4-RD) is an immune-mediated, chronic inflammatory disorder that can affect multiple organ systems (1,2). The pathogenesis involves lymphocytic infiltration of tissues with subsequent secretion of IgG4 (3). The most commonly affected sites include the orbits, lacrimal and salivary glands, pancreas, lungs, biliary ducts, kidneys, aorta, and retroperitoneum (4,5,6). Due to its varied presentation, IgG4-RD can be mistaken for malignancy, infection, or other autoimmune diseases, necessitating a comprehensive evaluation encompassing clinical, radiological, and pathological data for accurate diagnosis (6).

$^{18}\text{F}$ -fluorodeoxyglucose-positron emission tomography/computed tomography ( $^{18}\text{F}$ -FDG PET/CT) is a valuable imaging modality for identifying increased metabolic activity in affected organs, guiding biopsy sites, and assessing therapeutic response (7,8,9). Various studies have demonstrated the utility of  $^{18}\text{F}$ -FDG PET/CT in evaluating treatment response in IgG4-RD (8,9,10,11). Rare manifestations, such as IgG4-related sclerosing mesenteritis and sacroiliac involvement, have also been documented in the literature (12,13).  $^{18}\text{F}$ -FDG PET/CT is particularly beneficial in identifying the extent of multiorgan involvement.

We report a case of IgG4-RD diagnosed by lacrimal gland biopsy. The patient presented with eyelid swelling and elevated inflammatory markers.  $^{18}\text{F}$ -FDG PET/CT was performed to assess systemic involvement, revealing increased FDG uptake and enlargement of both lacrimal glands, more pronounced on the right, without evidence of involvement of other organs.

The patient underwent corticosteroid and rituximab therapy. A follow-up  $^{18}\text{F}$ -FDG PET/CT conducted six months post-treatment demonstrated normalization of the lacrimal gland size and the absence of FDG uptake, indicating a favorable therapeutic response. To our knowledge, this is the first  $^{18}\text{F}$ -FDG PET/CT image of isolated lacrimal IgG4-RD demonstrating its complete response to treatment.

This case underscores the significance of  $^{18}\text{F}$ -FDG PET/CT in evaluating treatment response in IgG4-RD. Pre-treatment coronal fusion (A), coronal CT (B), axial fusion (C), and axial PET (E) images demonstrate increased size and FDG uptake in the bilateral lacrimal glands, more prominent on the right (red arrows). Post-treatment coronal fusion (F), coronal CT (G), axial fusion (H), axial CT (I), and axial PET (J) images show normalization of lacrimal gland size and absence of pathological FDG uptake. Physiological uptake in lateral rectus (green arrows) and medial rectus (blue arrows) muscles can also be seen.



**Figure 2.** On pre-treatment magnetic resonance images, T1-weighted non-contrast images (A) demonstrated enlargement of both lacrimal glands (red arrows), while contrast-enhanced images (B) revealed contrast enhancement of the lacrimal glands. On the post-treatment T1-weighted images (non-contrast, C; contrast-enhanced, D), regression was observed.

## Ethics

**Informed Consent:** Informed consent was obtained from the patient for the use of their imaging data.

## Footnotes

### Authorship Contributions

Surgical and Medical Practices: A.K., S.A., Concept: A.K., S.A., O.E.Ş., L.U.B., S.S., K.S., H.B.S., Design: A.K., S.A., Data Collection or Processing: A.K., S.A., Analysis or Interpretation: A.K., S.A., O.E.Ş., L.U.B., S.S., K.S., H.B.S., Literature Search: A.K., Writing: A.K.

**Conflict of Interest:** No conflicts of interest were declared by the authors.

**Financial Disclosure:** The authors declare that this study has received no financial support.

## References

- Ren H, Mori N, Sato S, Mugikura S, Masamune A, Takase K. American College of Rheumatology and the European League Against Rheumatism classification criteria for IgG4-related disease: an update for radiologists. *Jpn J Radiol.* 2022;40:876-893.
- Hao FY, Yang FX, Bian HY, Zhao X. Immunoglobulin G4-related lymph node disease with an orbital mass mimicking castleman disease: a case report. *World J Clin Cases.* 2021;9:10999-11006.
- Perugino CA, Stone JH. IgG4-related disease: an update on pathophysiology and implications for clinical care. *Nat Rev Rheumatol.* 2020;16:702-714.
- Sekiguchi H, Horie R, Kanai M, Suzuki R, Yi ES, Ryu JH. IgG4-related disease: retrospective analysis of one hundred sixty-six patients. *Arthritis Rheumatol.* 2016;68:2290-2299.
- Kuroda N, Nao T, Fukuhara H, Karashima T, Inoue K, Taniguchi Y, Takeuchi M, Zen Y, Sato Y, Notohara K, Yoshino T. IgG4-related renal disease: clinical and pathological characteristics. *Int J Clin Exp Pathol.* 2014;7:6379-6385.
- Wallace ZS, Naden RP, Chari S, Choi H, Della-Torre E, Dicaire JF, Hart PA, Inoue D, Kawano M, Khosroshahi A, Kubota K, Lanzillotta M, Okazaki K, Perugino CA, Sharma A, Saeki T, Sekiguchi H, Schleinitz N, Stone JR, Takahashi N, Umehara H, Webster G, Zen Y, Stone JH; American College of Rheumatology/European League Against Rheumatism IgG4-Related Disease Classification Criteria Working Group. The 2019 American College of Rheumatology/European League Against Rheumatism classification criteria for IgG4-related disease. *Arthritis Rheumatol.* 2020;72:7-19.
- Tang CYL, Chua WM, Cheng LTJ, Fong W, Zaheer S, Lam WW. <sup>18</sup>F-FDG PET/CT manifestations of IgG4-related disease. *Br J Radiol.* 2021;94:20210105.
- Zhang J, Chen H, Ma Y, Xiao Y, Niu N, Lin W, Wang X, Liang Z, Zhang F, Li F, Zhang W, Zhu Z. Characterizing IgG4-related disease with <sup>18</sup>F-FDG PET/CT: a prospective cohort study. *Eur J Nucl Med Mol Imaging.* 2014;41:1624-1634.
- Bai Z, Zhou T, Yu Z, Chen Y, Dong L. Clinical value of <sup>18</sup>F-FDG PET/CT in IgG4-related disease. *Ann Nucl Med.* 2022;36:651-660.
- Mitamura K, Arai-Okuda H, Yamamoto Y, Norikane T, Takami Y, Fujimoto K, Wakiya R, Ozaki H, Dobashi H, Nishiyama Y. Disease activity and response to therapy monitored by [<sup>18</sup>F]FDG PET/CT using volume-based indices in IgG4-related disease. *EJNMMI Res.* 2020;10:153.
- Ebbo M, Grados A, Guedj E, Gobert D, Colavolpe C, Zaidan M, Masseur A, Bernard F, Berthelot JM, Morel N, Lifermann F, Palat S, Haroche J, Mariette X, Godeau B, Bernit E, Costedoat-Chalumeau N, Papo T, Hamidou M, Harlé JR, Schleinitz N. Usefulness of 2-[<sup>18</sup>F]-fluoro-2-deoxy-D-glucose-positron emission tomography/computed tomography for staging and evaluation of treatment response in IgG4-related disease: a retrospective multicenter study. *Arthritis Care Res (Hoboken).* 2014;66:86-96.
- Fu Z, Chen G, Liu M, Li Z, Li Q. <sup>18</sup>F-FDG PET/CT findings in a patient with IgG4-related sclerosing mesenteritis. *Clin Nucl Med.* 2018;43:294-295.
- Elsobky S, Dattani V, Wagner T, Mandumula S, Tavare A. FDG PET/CT in sacroiliac IgG4 disease. *Clin Nucl Med.* 2021;46:e548-e550.